



Learn more at
[Keawalau.com](https://www.Keawalau.com)

Keawalau Community Outreach Team
c/o AHED Foundation
900 Fort Street Mall, Suite 1818
Honolulu, HI 96813



Presorted
Standard
U.S. Postage
PAID
Honolulu, HI
Permit No. 1838



A gathering place
for Waipahu

**TRUE TO ITS ROOTS,
A PLACE THAT WELCOMES ALL**

Our newest community, Keawalau at Waipahu, is proposed for the corner of Farrington Highway and Waipahu Depot Street. If built, Keawalau will offer Waipahu residents numerous community benefits.

- By creating a vibrant community, walkable retail facilities and welcoming gathering spaces, Keawalau will improve public safety.
- Keawalau will be a renewed gathering place for the community, with over 50,000 sq. ft. of grocery, retail and restaurant offerings.
- Keawalau will create approximately 500 affordable homes for 'ohana and kūpuna.
- The proposed community will generate more than \$1.9 million in new school fees to support education.
- Keawalau will be conveniently located near the Hikimoe bus station, new Pouhala Transit Station, Waipahu High School and other popular community sites.



Kamehameha Schools®



Masks are not mandatory, though they are recommended given Hawaii's high-risk COVID-19 Community Level. We encourage you to do what makes you feel safe. Being around other people in public poses a risk of exposure to COVID-19. By attending this event, you voluntarily assume that risk.

Please join us

for a community open house to discuss this exciting new opportunity for Waipahu.

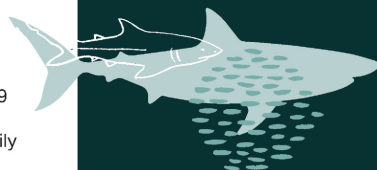
Keawalau Community Open House

WHEN: Tuesday, September 20, 2022
6pm – 8pm

WHERE: Filipino Community Center
94-428 Mokuola Street
Waipahu, HI 96797

Light refreshments will be provided.

RSVP by Phone or Text at 808-437-2646




keawalau
AT WAIPAHU